



SHIKSHAN MANDAL BHAGUR'S,
AFFILIATED TO SAVITRIBAI PHULE PUNE UNIVERSITY, PUNE,

**Shri. Eknathrao sahadu shete Arts,
Commerce & Science College, Deolali
Camp, Nashik**

Matoshree Yamunabai Karandikar Shaikshanik Sankul, Sv.No.306/1A/4B/2, Barnes School Road, Deolali Camp,
Tal & Dist Nashik-422401.

E-mail: smbcollege2019@gmail.com

COLLEGE ID: PU/AN/ACS/181/201 Ph.No.0253-4032579

Criterion-VII: Institutional Values and Best Practices

**«Key Indicator: 7.1 »: « Institutional
Values and Best Practices »**

QnM: 7.1.2

The Institution has facilities and initiatives for

- 1. Management of the various types of degradable and non-degradable waste**
- 2. Water Conservation**
- 3. Green Campus initiatives**
- 4. Disable -friendly, barrier free environment**



SHIKSHAN MANDAL BHAGUR'S,
AFFILIATED TO SAVITRIBAI PHULE PUNE UNIVERSITY, PUNE,

**Shri. Eknathrao sahadu shete Arts,
Commerce & Science College, Deolali
Camp, Nashik**

Matoshree Yamunabai Karandikar Shaikshanik Sankul, Sv.No.306/1A/4B/2, Barnes School Road, Deolali Camp,
Tal & Dist Nashik-422401.

E-mail: smbcollege2019@gmail.com COLLEGE ID: PU/AN/ACS/181/2019 Ph.No.0253-4032579

DECLARATION

This document serves to affirm that the information, reports, authentic copies of supporting documents, numerical data, and other materials submitted in the files have been verified by the Internal Quality Assurance Cell (IQAC) and are accurate according to the records.

This declaration is intended for the NAAC accreditation of the Higher Education Institution (HEI) for the first cycle period from 2019-20 to 2023-24.

Place: - Deolali Camp


Co-Ordinator
IQAC
Shri Eknathrao Sahadu Shete
Arts, Comm. & Sci.Senior College
Deolali Camp, Nashik




Principal
Shri Eknathrao Sahadu Shete
Art's Comm. & Sci. Senior College,
Deolali Camp, Nashik



SHIKSHAN MANDAL BHAGUR'S,
AFFILIATED TO SAVITRIBAI PHULE PUNE UNIVERSITY, PUNE,
**Shri. Eknathrao Sahadu Shete Arts, Commerce & Science
College, Deolali Camp, Nashik**

Matoshree Yamunabai Karandikar Shaikshanik Sankul, Sv.No.306/1A/4B/2, Barnes School Road, Deolali Camp, Tal & Dist Nashik-422401.

E-mail: smbcollege2019@gmail.com

COLLEGE ID: PU/AN/ACS/181/2019

Ph.No.0253-4032579

7.1.2 The Institution has facilities and initiatives for

1. Alternate sources of energy and energy conservation measures
2. Management of the various types of degradable and non degradable waste
3. Water conservation
4. Green campus initiatives

QnM: 7.1.2 The Institution has facilities and initiatives for...

- 1. Management of the various types of degradable and non-degradable waste.**
- 2. Water Conservation.**
- 3. Green Campus initiatives.**
- 4 Disable -friendly, barrier free environment**



SHIKSHAN MANDAL BHAGUR'S,
AFFILIATED TO SAVITRIBAI PHULE PUNE UNIVERSITY, PUNE,

**Shri. Eknathrao Sahadu Shete Arts, Commerce & Science
College, Deolali Camp, Nashik**

Matoshree Yamunabai Karandikar Shaikshanik Sankul, Sv.No.306/1A/4B/2, Barnes School Road, Deolali Camp, Tal & Dist Nashik-422401.

E-mail: smbcollege2019@gmail.com

COLLEGE ID: PU/AN/ACS/181/2019

Ph.No.0253-4032579

7.1.2 Describe the facilities in the Institution for the management of the following types of degradable and non-degradable waste.

The College has various facilities and techniques for the management of degradable and non-degradable waste. The primary focus is to reduce, reuse and recycle the waste. The institute has constituted a committee that deals with the minimization of waste. Every day the waste is collected in bins.

Following principles are followed for waste management:

1. Principles- Refuse, Reduce, Reuse and Recycle
2. Segregation of Waste at Source
3. Different treatment for different types of waste
4. Disposal at nearest possible point.

Solid Waste Management:

The College has organized many activities for disposing the waste. In the college campus solid types of waste consist of waste papers, fallen leaves. The waste is separated at source only and according to type of waste is disposed. After several weeks waste materials started to decompose to form a manure, then it is used for the plantation in college campus.

Use of Dustbins:

In the college campus, we have placed dustbin at various places where dry is collected in the separate dustbin. Dry waste disposed at nearest possible point


Co-Ordinator

IQAC
Shri Eknathrao Sahadu Shete
Arts, Comm. & Sci. Senior College
Deolali Camp, Nashik




Principal

Shri Eknathrao Sahadu Shete
Art's Comm. & Sci. Senior College,
Deolali Camp, Nashik

7.1.2 Describe the facilities in the Institution for the management of the following types of degradable and non-degradable waste.




Co-Ordinator
IQAC

Shri Eknathrao Sahadu Shete
Arts, Comm. & Sci. Senior College
Deolali Camp, Nashik




Principal
Shri Eknathrao Sahadu Shete
Art's Comm. & Sci. Senior College,
Deolali Camp, Nashik



Solid Waste management





Co-Ordinator
IQAC

Shri Eknathrao Sahadu Shete
Arts, Comm. & Sci. Senior College
Deolali Camp, Nashik



Principal
Shri Eknathrao Sahadu Shete
Art's Comm. & Sci. Senior College,
Deolali Camp, Nashik



SHIKSHAN MANDAL BHAGUR'S,
AFFILIATED TO SAVITRIBAI PHULE PUNE UNIVERSITY, PUNE,

Shri. Eknathrao sahadu shete Arts, Commerce & Science College, Deolali Camp, Nashik

Matoshree Yamunabai Karandikar Shaikshanik Sankul, Sv.No.306/1A/4B/2, Barnes School Road, Deolali Camp, Tal & Dist Nashik-422401.

E-mail: smbcollege2019@gmail.com

COLLEGE ID: PU/AN/ACS/181/2019

Ph.No.0253-4032579

CCTV



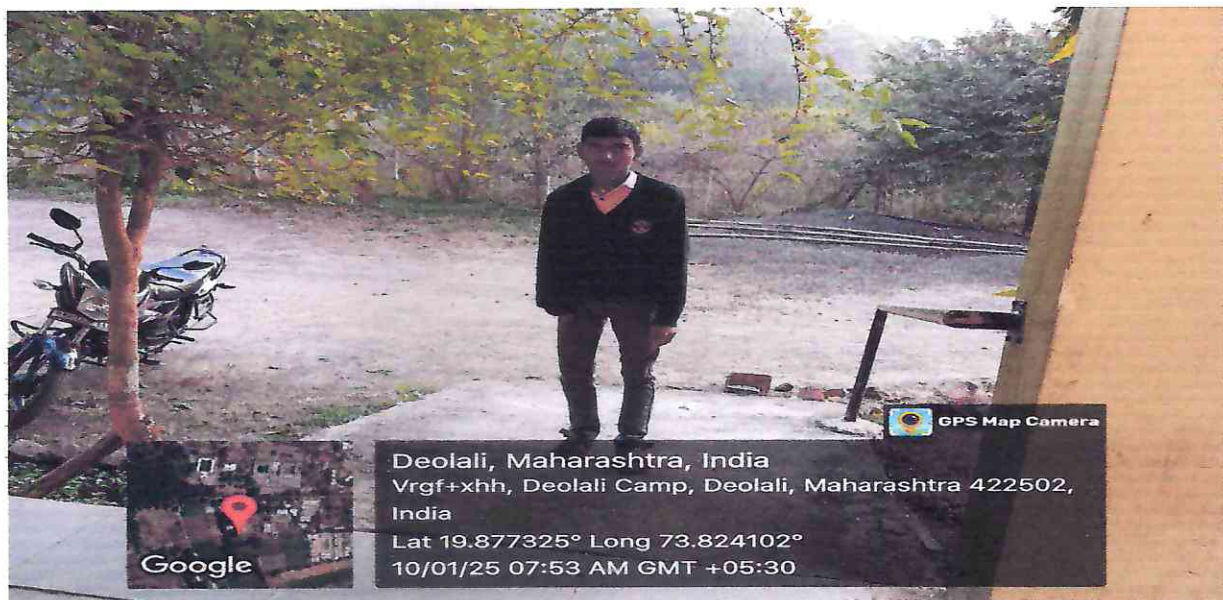
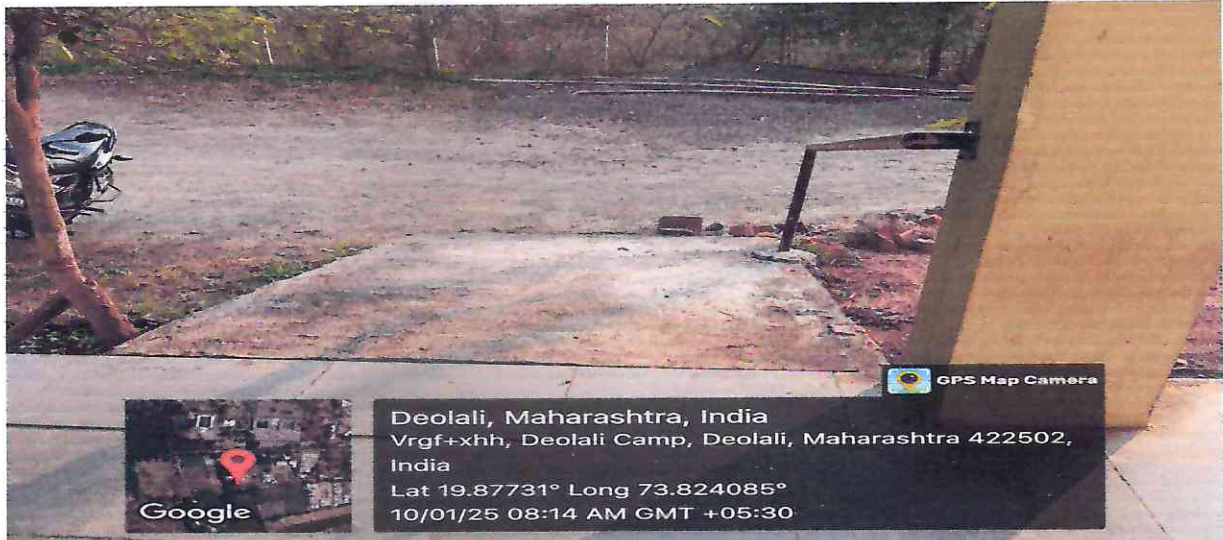
Co-Ordinator

IQAC
Shri Eknathrao Sahadu Shete
Arts, Comm. & Sci. Senior College
Deolali Camp, Nashik



Principal
Shri Eknathrao Sahadu Shete
Art's Comm. & Sci. Senior College,
Deolali Camp, Nashik

Ramp



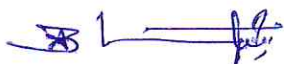

Co-Ordinator
IQAC
Shri Eknathrao Sahadu Shete
Arts, Comm. & Sci. Senior College
Deolali Camp, Nashik




Principal
Shri Eknathrao Sahadu Shete
Art's Comm. & Sci. Senior College,
Deolali Camp, Nashik

Wheelchair





Co-Ordinator
IQAC
Shri Eknathrao Sahadu Shete
Arts, Comm. & Sci. Senior College
Deolali Camp Nashik




Principal
Shri Eknathrao Sahadu Shete
Art's Comm. & Sci. Senior College,
Deolali Camp, Nashik

Ladies common room



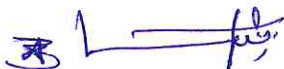

Co-Ordinator
IQAC
Shri Eknathrao Sahadu Shete
Arts, Comm. & Sci. Senior College
Deolali Camp, Nashik


Principal
Shri Eknathrao Sahadu Shete
Art's Comm. & Sci. Senior College,
Deolali Camp, Nashik






Ladies Toilet



Co-Ordinator
IQAC
Shri Eknathrao Sahadu Shete
Arts, Comm. & Sci. Senior College
Deolali Camp, Nashik




Principal
Shri Eknathrao Sahadu Shete
Art's Comm. & Sci. Senior College,
Deolali Camp, Nashik





Co-Ordinator
IQAC

Shri Eknathrao Sahadu Shete
Arts, Comm. & Sci. Senior College
Deolali Camp, Nashik





Principal
Shri Eknathrao Sahadu Shete
Art's Comm. & Sci. Senior College,
Deolali Camp, Nashik

Drinking Water

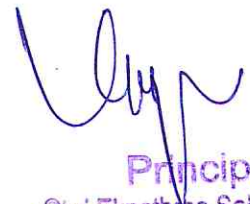




Co-Ordinator
IQAC

Shri Eknathrao Sahadu Shete
Arts, Comm. & Sci. Senior College
Deolali Camp, Nashik





Principal

Shri Eknathrao Sahadu Shete
Art's Comm. & Sci. Senior College,
Deolali Camp, Nashik

Water Facility





Co-Ordinator
IQAC
Shri Eknathrao Sahadu Shete
Arts, Comm. & Sci. Senior College
Deolali Camp, Nashik




Principal
Shri Eknathrao Sahadu Shete
Arts Comm. & Sci. Senior College;
Deolali Camp, Nashik



SHIKSHAN MANDAL BHAGUR'S,
AFFILIATED TO SAVITRIBAI PHULE PUNE UNIVERSITY, PUNE,

**Shri. Eknathrao Sahadu Shete Arts, Commerce & Science
College, Deolali Camp, Nashik**

Matoshree Yamunabai Karandikar Shaikshanik Sankul, Sv.No.306/1A/4B/2, Barnes School Road, Deolali Camp, Tal & Dist Nashik-422401.

E-mail: smbcollege2019@gmail.com

COLLEGE ID: PU/AN/ACS/181/2019

Ph.No.0253-4032579

7.1.2 Describe the facilities in the Institution for the management of the following types of degradable and non-degradable waste.

Solid Waste management



[Signature]

Co-Ordinator
IQAC
Shri Eknathrao Sahadu Shete
Arts, Comm. & Sci. Senior College
Deolali Camp, Nashik

[Signature]
Principal
Shri Eknathrao Sahadu Shete
Art's Comm. & Sci. Senior College,
Deolali Camp, Nashik



Plastic Bag Banned in the College Campus




Principal
Shri Eknathrao Sahadu Shete
Arts, Comm. & Sci. Senior College,
Deolali Camp, Nashik


Co-Ordinator
IQAC
Shri Eknathrao Sahadu Shete
Arts, Comm. & Sci. Senior College
Deolali Camp, Nashik



SHIKSHAN MANDAL BHAGUR'S,
AFFILIATED TO SAVITRIBAI PHULE PUNE UNIVERSITY, PUNE,

**Shri. Eknathrao sahadu shete Arts, Commerce & Science
College, Deolali Camp, Nashik**

Matoshree Yamunabai Karandikar Shaikshanik Sankul, Sv.No.306/1A/4B/2, Barnes School Road, Deolali Camp, Tal & Dist Nashik-422401.

E-mail: smbcollege2019@gmail.com

COLLEGE ID: PU/AN/ACS/181/2019

Ph.No.0253-4032579

Botanical Garden



SHIKSHAN MANDAL BHAGUR'S,
AFFILIATED TO SAVITRIBAI PHULE PUNE UNIVERSITY, PUNE,

**Shri. Eknathrao sahadu shete Arts, Commerce & Science
College, Deolali Camp, Nashik**

Matoshree Yamunabai Karandikar Shaikshanik Sankul, Sv.No.306/1A/4B/2, Barnes School Road, Deolali Camp, Tal & Dist Nashik

Co-Ordinator
IQAC
Shri Eknathrao Sahadu Shete
Arts, Comm. & Sci.Senior College
Deolali Camp, Nashik



Principal
Shri Eknathrao Sahadu Shete
Art's Comm. & Sci. Senior College,
Deolali Camp, Nashik

Photographs of Green Campus initiatives



College Entry Gate



Front side of college


Co-Ordinator
IQAC
Shri Eknathrao Sahadu Shete
Arts, Comm. & Sci. Senior College
Deolali Camp, Nashik




Principal
Shri Eknathrao Sahadu Shete
Arts Comm. & Sci. Senior College,
Deolali Camp, Nashik




Co-Ordinator
IQAC
Shri Eknathrao Sahadu Shete
Arts, Comm. & Sci. Senior College
Deolali Camp, Nashik




Principal
Shri Eknathrao Sahadu Shete
Arts, Comm. & Sci. Senior College,
Deolali Camp, Nashik



SHIKSHAN MANDAL BHAGUR'S,
AFFILIATED TO SAVITRIBAI PHULE PUNE UNIVERSITY, PUNE,
Shri. Eknathrao sahadu shete Arts, Commerce & Science
College, Deolali Camp, Nashik

Matoshree Yamunabai Karandikar Shaikshanik Sankul, Sv.No.306/1A/4B/2, Barnes School Road, Deolali Camp, Tal & Dist Nashik-422401.

E-mail: smbcollege2019@gmail.com

COLLEGE ID: PU/AN/ACS/181/2019

Ph.No.0253-4032579



Tree plantation





Co-Ordinator
IQAC
Shri Eknathrao Sahadu Shete
Arts, Comm. & Sci. Senior College
Deolali Camp, Nashik




Principal
Shri Eknathrao Sahadu Shete
Art's Comm. & Sci. Senior College,
Deolali Camp, Nashik



[Handwritten signature]

Co-Ordinator
IQAC
Shri Eknathrao Sahadu Shete
Arts, Comm. & Sci. Senior College
Deolali Camp, Nashik

[Handwritten signature]

Principal
Shri Eknathrao Sahadu Shete
Art's Comm. & Sci. Senior College,
Deolali Camp, Nashik





SHIKSHAN MANDAL BHAGUR'S,
AFFILIATED TO SAVITRIBAI PHULE PUNE UNIVERSITY, PUNE,
**Shri. Eknathrao Sahadu Shete Arts, Commerce & Science
College, Deolali Camp, Nashik**

Matoshree Yamunabai Karandikar Shaikshanik Sankul, Sv.No.306/1A/4B/2, Barnes School Road, Deolali Camp, Tal & Dist Nashik-422401.

E-mail: smbcollege2019@gmail.com

COLLEGE ID: PU/AN/ACS/181/2019

Ph.No.0253-4032579

7.1.3 Quality audit on environment and energy regularly undertaken by the Institution. The institutional environment and energy initiatives are confirmed through the following

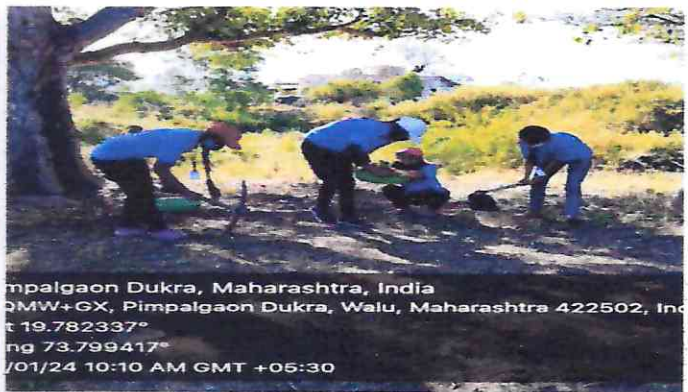
1. Clean and Green Beyond Campus Initiatives


Co-Ordinator
IQAC
Shri Eknathrao Sahadu Shete
Arts, Comm. & Sci.Senior College
Deolali Camp, Nashik




Principal
Shri Eknathrao Sahadu Shete
Art's Comm. & Sci. Senior Collage,
Deolali Camp, Nashik

Principal
Shri Eknathrao Sahadu Shete
Art's Comm. & Sci. Senior Collage,
Deolali Camp, Nashik



Clean and Green Beyond Campus Initiatives


Co-Ordinator
IQAC
Shri Eknathrao Sahadu Shete
Arts, Comm. & Sci. Senior College
Deolali Camp, Nashik




Principal
Shri Eknathrao Sahadu Shete
Art's Comm. & Sci. Senior College,
Deolali Camp, Nashik



SHIKSHAN MANDAL BHAGUR'S,
AFFILIATED TO SAVITRIBAI PHULE PUNE UNIVERSITY, PUNE,
**Shri. Eknathrao Sahadu Shete Arts, Commerce & Science
College, Deolali Camp, Nashik**

Matoshree Yamunabai Karandikar Shaikshanik Sankul, Sv.No.306/1A/4B/2, Barnes School Road, Deolali Camp, Tal & Dist Nashik-422401.

E-mail: smbcollege2019@gmail.com

COLLEGE ID: PU/AN/ACS/181/2019

Ph.No.0253-4032579

To Control Pollution


"Environmental Awareness Program"



Use bicycle


Co-Ordinator
IQAC
Shri Eknathrao Sahadu Shete
Arts, Comm. & Sci. Senior College
Deolali Camp, Nashik




Principal
Shri Eknathrao Sahadu Shete
Art's Comm. & Sci. Senior College,
Deolali Camp, Nashik



**Students & non-teaching members for maintenance of green campus
 by using Battery Powered Vehicles**


Co-Ordinator
 IQAC
 Shri Eknathrao Sahadu Shete
 Arts, Comm. & Sci. Senior College
 Deolali Camp, Nashik




Principal
 Shri Eknathrao Sahadu Shete
 Art's Comm. & Sci. Senior College,
 Deolali Camp, Nashik



SHIKSHAN MANDAL BHAGUR'S,
AFFILIATED TO SAVITRIBAI PHULE PUNE UNIVERSITY, PUNE,

Shri. Eknathrao sahadu shete Arts, Commerce & Science College, Deolali Camp, Nashik

Matoshree Yamunabai Karandikar Shaikshanik Sankul, Sv.No.306/1A/4B/2, Barnes School Road, Deolali Camp, Tal & Dist Nashik-422401.

E-mail: smbcollege2019@gmail.com

COLLEGE ID: PU/AN/ACS/181/2019

Ph.No.0253-4032579

WATER HARVESTING



Rain Water Collected for ground water recharge


Co-Ordinator
IQAC
Shri Eknathrao Sahadu Shete
Arts, Comm. & Sci. Senior College
Deolali Camp, Nashik




Principal
Shri Eknathrao Sahadu Shete
Arts Comm. & Sci. Senior College,
Deolali Camp, Nashik



SHIKSHAN MANDAL BHAGUR'S,
AFFILIATED TO SAVITRIBAI PHULE PUNE UNIVERSITY, PUNE,
**Shri. Eknathrao Sahadu Shete Arts, Commerce & Science
College, Deolali Camp, Nashik**

Matoshree Yamunabai Karandikar Shaikshanik Sankul, Sv.No.306/1A/4B/2, Barnes School Road, Deolali Camp, Tal & Dist Nashik-422401.

E-mail: smbcollege2019@gmail.com

COLLEGE ID: PU/AN/ACS/181/2019

Ph.No.0253-4032579



Providing clean water Animals

**Co-Ordinator
IQAC**

**Shri Eknathrao Sahadu Shete
Arts, Comm. & Sci.Senior College
Deolali Camp, Nashik**



Principal


**Shri Eknathrao Sahadu Shete
Art's Comm. & Sci. Senior College,
Deolali Camp, Nashik**

NOTICE

On the occasion of the World Ozone Day of 16th September 2023 was held on 20 September 2023, in this event poster was presented and street play drama was acted by students in college campus at grounds of Ekhnathrao Sahadu Shette Arts, Commerce & Science Senior College Barnes School Road, Deolali Camp, Nashik-422 401 to spread awareness regarding the depletion of ozone layer. The activity was conducted during the break time at 9:30 am. All the teachers and non-teaching staff of the college was requested to remain present.


Co-Ordinator
IQAC
Shri Eknathrao Sahadu Shete
Arts, Comm. & Sci. Senior College
Deolali Camp, Nashik




Principal
Shri Eknathrao Sahadu Shete
Art's Comm. & Sci. Senior College,
Deolali Camp, Nashik

Report on

Topic: World Ozone Day

Date: 20/09/2023

Time: 9:30 am

Venue: Ekhnathrao Sahadu Shette Arts, Commerce & Science Senior College Barnes School Road, Deolali Camp, Nashik

Participant – Students of F.Y.B.Sc. and S.Y.B.Sc.

Department – Science

Organizing Committee: Environmental Awareness Committee

Coordinator: - Asst.Prof.Suraj Gangavane

Participant's Profile: - Students of F.Y.B.Sc. and S.Y.B.Sc.

Objectives of Programme:

1. To spread awareness among people regarding depletion of ozone layer
2. To find possible solution to preserve it by understanding reduced consumption of CFCs.
3. To enlighten students regarding negative impact due to negligence of humankind towards environment.

Preamble:

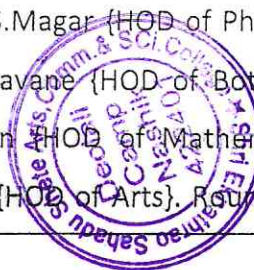
World Ozone Day, also known as International Day for the preservation of the ozone layer is observed annually on September, 16 to bring attention to the ozone layer and danger of ozone depletion. The purpose of the day is to raise awareness about the importance of the preservation of the ozone layer

“Montreal Protocol: Fixing the ozone layer and reducing climate change” has been chosen as this year's theme in order to encourage sustainable development.

Description about the Program:

In Ekhnathrao Sahadu Shette Arts, Commerce & Science Senior College Barnes School Road, Deolali Camp, Nashik has been observed World Ozone Day 2023 in the college campus on 20th September 2023. Every year World Ozone Day is Observed on September 16. However, this year due to certain unavoidable circumstances it was not possible to celebrate on time. The main aim of the ozone day celebration is to remind the world about the depletion of the ozone layer and its danger. The programme was organized by environmental awareness Committee. Shri. B.S.Sapkale, principal of this college and Asst.Prof.P.S.Magar (HOD of Physics), Asst.Prof.S.M. Dhongale (HOD of Chemistry), Asst.Prof.Suraj Gangavane (HOD of Botany), Asst.Prof. Anam Saniya (HOD of Zoology), Asst.Prof. B.Mahajan (HOD of Mathematics), Asst.Prof. A. Thakre (HOD of Commerce), Asst.Prof.M.D. Kapse (HOD of Arts). Round 100 students were

Co-Ordinator
IQAC
Shri Ekhnathrao Sahadu Shete
Arts, Comm. & Sci. Senior College
Deolali Camp, Nashik



Principal
Shri Ekhnathrao Sahadu Shete
Arts, Comm. & Sci. Senior College,
Deolali Camp, Nashik

also present in the programme.

The programme has been with the felicitation of chief guest Prin.B.S.Sapkale by M.D.Kapse. inaugural address was delivered by S.D.Gangavane. After that the resource person A.S.Khan helped students with organising of street play. Individuals from class F.Y.B.sc and S.Y.B.sc showed enthusiastic performance during their skit by presenting poster based on ozone depletion due to individual activities and street play drama acted by student was on college campus's main ground.

During street play students briefed about the reasons of ozone layer depletion by use of CFC's and other pesticides and chemicals. Students explained the adverse effects of ozone layer depletion on flora, fauna, environment & human health. participants urged the all the students in the college to work together and protect ozone layer.

The programme finally concluded with, showcasing an act on ozone hole causing diseases such as cancer with slogan "Save Ozone Save Planet"

The end with vote of thanks by Asst.Prof A.S.Khan {Dept of Zoology}

"Earth without OZONE is like a house without a roof"

"Ozone is just not a layer but a protector"

Feedback analyzed: -

1. Students needed more practice for effective outcomes.
2. More activities-based events should be included.
3. Street play could be leveled up by performing it in more general public areas.

Outcomes:

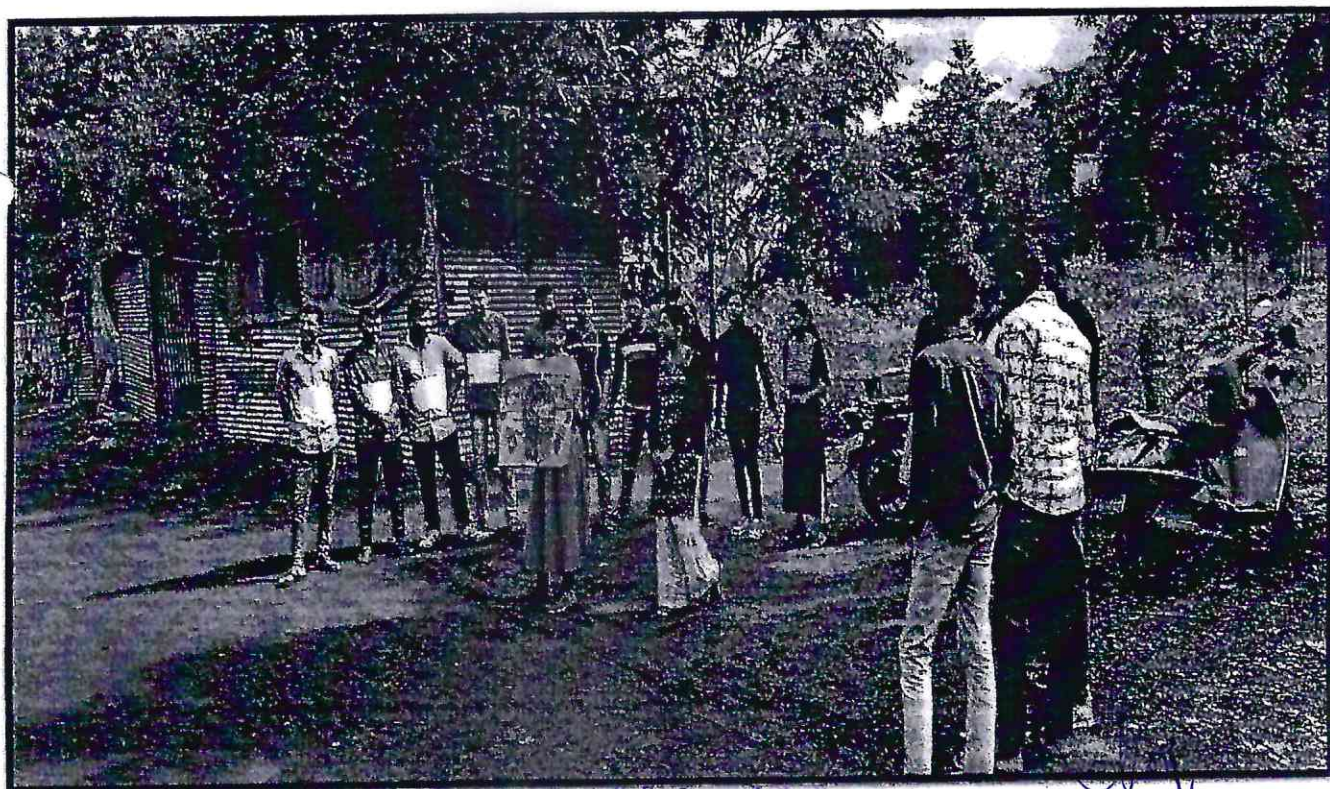
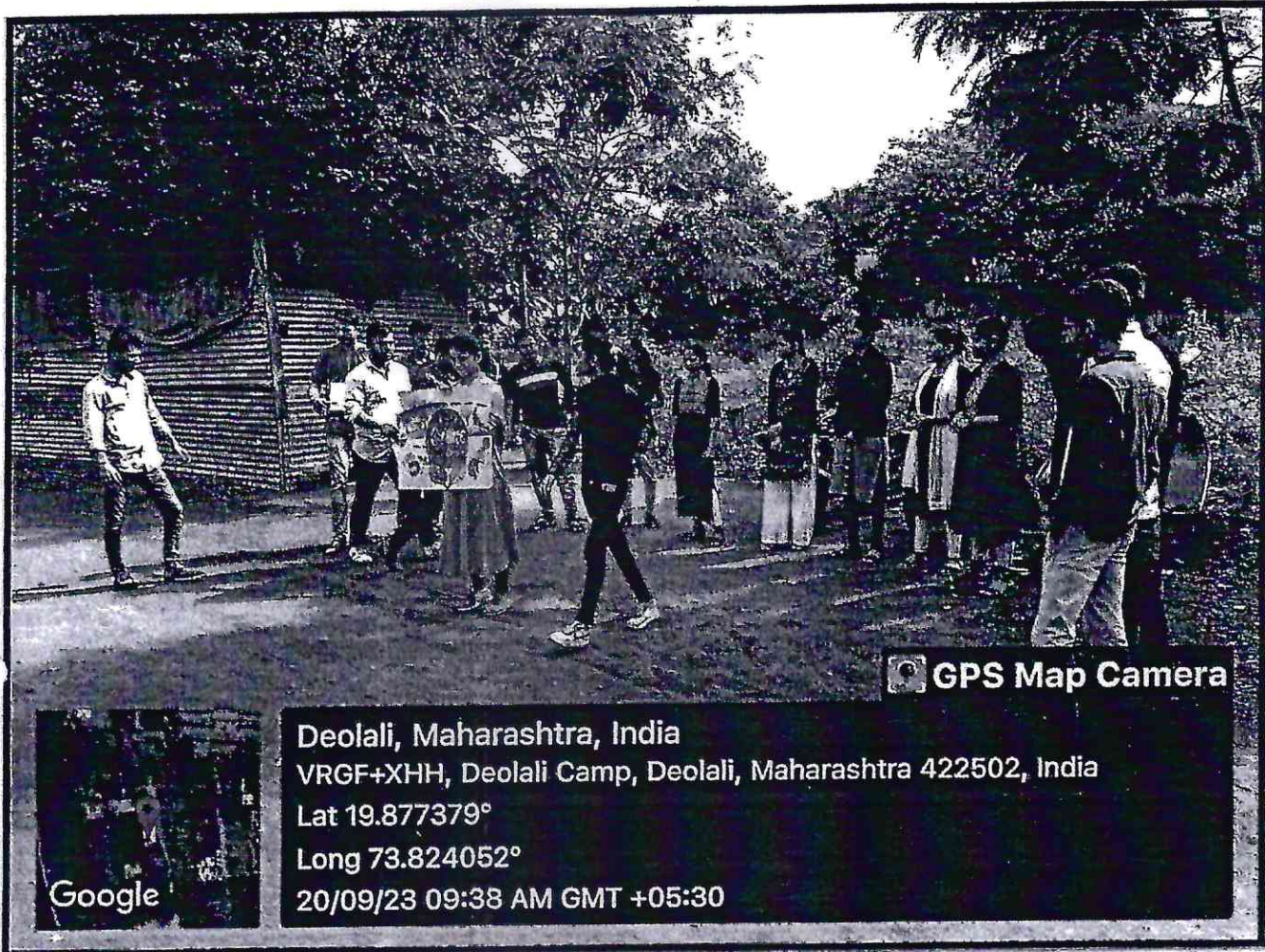
1. The students understood the importance of ozone layer through depiction through
2. Students understood due to depletion of ozone layer, the earth temperature rising and there is increased risk of sunburn and skin cancer and effects plant as well.


(Prof. CS Originator)
IQAC
Shri Eknathrao Sahadu Shete
(Coordinator)
Arts, Comm. & Sci. Senior College
Deolali Camp, Nashik




B.S. Sapkale
Principal
(Principal)
Shri Eknathrao Sahadu Shete
Arts, Comm. & Sci. Senior College,
Deolali Camp, Nashik

Photos of the Activity




Co-Ordinator
 IQAC
 Shri Eknathrao Sahadu Shete
 Arts, Comm. & Sci. Senior College
 Deolali Camp, Nashik



Principal
 Shri Eknathrao Sahadu Shete
 Art's Comm. & Sci. Senior College,
 Deolali Camp, Nashik



GPS Map Camera



Google

Deolali, Maharashtra, India

VRGF+XHH, Deolali Camp, Deolali, Maharashtra 422502, India

Lat 19.877379°

Long 73.824052°

20/09/23 09:38 AM GMT +05:30



GPS Map Camera



Google

Deolali, Maharashtra, India

VRGF+XHH, Deolali Camp, Deolali, Maharashtra 422502, India

Lat 19.877379°

Long 73.824052°

20/09/23 09:38 AM GMT +05:30

[Signature]

Co-Ordinator
IQAC

Shri Eknathrao Sahadu Shete
Arts, Comm. & Sci. Senior College,



Principal

Shri Eknathrao Sahadu Shete
Arts Comm. & Sci. Senior College,
Deolali Camp, Nashik



GPS Map Camera



Deolali, Maharashtra, India
 VRGF+XHH, Deolali Camp, Deolali, Maharashtra 422502, India
 Lat 19.877379°
 Long 73.824052°
 20/09/23 09:38 AM GMT +05:30



GPS Map Camera



Deolali, Maharashtra, India
 21, Barnes School Rd, Deolali Camp, Deolali, Maharashtra 422401,
 India
 Lat 19.877141°
 Long 73.824814°
 20/09/23 09:46 AM GMT +05:30

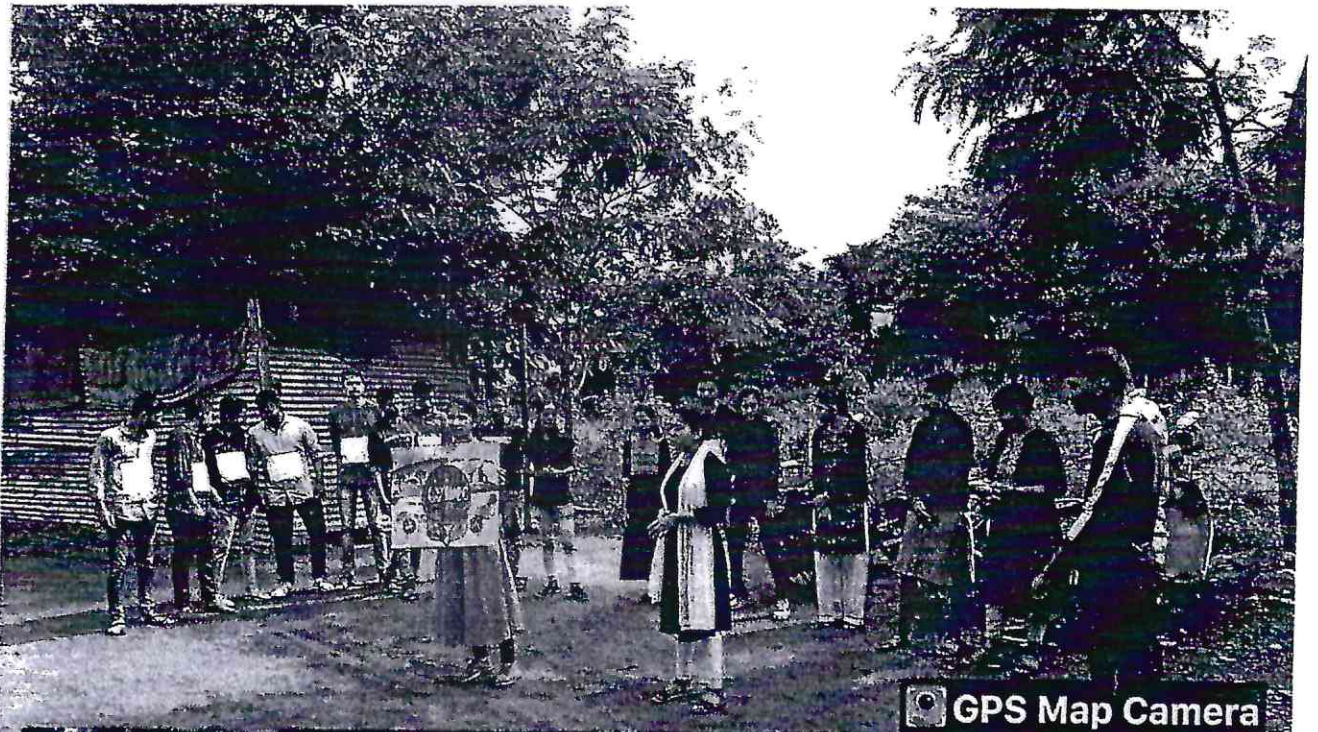
Co-Ordinator

IQAC

Shri Eknathrao Sahadu Shete
 Arts, Comm. & Sci. Senior College



Shri Eknathrao Sahadu Shete
 Arts Comm. & Sci. Senior College,
 Deolali Camp, Nashik



GPS Map Camera



Deolali, Maharashtra, India
 VRGF+XHH, Deolali Camp, Deolali, Maharashtra 422502, India
 Lat 19.877379°
 Long 73.824052°
 20/09/23 09:38 AM GMT +05:30



GPS Map Camera



Deolali, Maharashtra, India
 21, Barnes School Rd, Deolali Camp, Deolali, Maharashtra 422401,
 India
 Lat 19.877141°
 Long 73.824814°
 20/09/23 09:46 AM GMT +05:30

Co-Ordinator
 IQAC

Shri Eknathrao Sahadu Shete
 Arts. Comm. & Sci. Senior College
 Deolali Camp, Nashik



Principal
 Shri Eknathrao Sahadu Shete
 Arts. Comm. & Sci. Senior College,
 Deolali Camp, Nashik